

## I) CAMBODIA: COUNTRY BRIEF

### 1.1 International Flight and Visa

Participants will arrive to *Siem Reap* from their home country.

According to Visa Exemption Agreements, nationals of Laos, Malaysia, the Philippines, Singapore, Vietnam, Thailand, Indonesia, Brunei Darussalam and Myanmar do not need a tourist visa and may stay in Cambodia for 21 and 30 days respectively. Visitors from countries not under Visa Exemption Agreements must apply for Tourists (T) visa valid for one month. There are two ways of obtaining a visa for Cambodia:



**E-visa:** you can apply for a Cambodia tourist visa online.

Instead of applying through Cambodia embassy, all you need to do is to complete the online application form and pay with your Credit card. After receiving your Visa through email, print it out and bring it along when you travel to Cambodia. The fee for online application is USD30 + USD7 (processing charge); Single entry. To apply for an e-visa please visit: <https://www.evisa.gov.kh/Contactinformation.aspx>

**On-arrival visa:** You can apply for a Cambodia Tourist visa at the airports in Phnom Penh and Siem Reap. You will require a passport valid for at least six (6) months from the expiry date, and one (1) recent passport sized photo. A departure tax is charged on all domestic and international flights. The fee for on arrival tourist visa application is \$30 (single entry).

### 1.2 Fact about Cambodia

<b><u>Geography</u></b>  Cambodia is located in South-Eastern Asia, Bordering the Gulf of Thailand, between Thailand, Vietnam, and Laos. <b>Area Total:</b> 181,035 sq km <b>Land:</b> 176,515 sq km <b>Water:</b> 4,520 sq km	<b><u>Demographic</u></b>  <b>Nationality:</b> Cambodian <b>Total Population:</b> 15,708,756 <b>Religion:</b> Buddhism (official) 96.9%, Islam 1.9%, Christianity 0.4%, other 0.8% (2008 est.) <b>Ethnic Groups:</b> Khmer 90%, Vietnamese 5%, Chinese 1%, other 4% <b>Language:</b> Khmer (official) 96.3%, other 3.7% (2008 est.)
<b><u>Political and Legal System</u></b>  <b>Conventional Name:</b> Kingdom of Cambodia <b>Government Type:</b> Parliamentary Constitutional Monarchy <b>Chief of State:</b> King NORODOM Sihamoni (since 29 October 2004) <b>Head of Government:</b> Prime Minister HUN Sen (since 14 January 1985) <b>Cabinet:</b> Council of Ministers named by the Prime Minister and appointed by the monarch <b>Legal System:</b> Civil law system (influenced by the UN Transitional Authority in Cambodia), Communist legal theory, and common law.	<b><u>Economy</u></b>  Gross Domestic Product (GDP, Per Capita PPP): \$4,334 (2018 est.) Gross Domestic Product (GDP composition by Sector): <ul style="list-style-type: none"><li>▪ Agriculture: 23.5%</li><li>▪ Industry: 34.4%</li><li>▪ Services: 42.1% (2018 est.)</li></ul> <b>Agricultural Products:</b> Rice, Rubber, corn, Vegetables, cashews, cassava (manioc, tapioca), silk <b>Industries:</b> Tourism, garments, construction, rice milling, fishing, wood and wood products, rubber, cement, gem mining, textiles.

### 1.3 Simple Khmer Phrases

Khmer is the main and official language of Cambodia. Tourists may wish to learn a few spoken phrases. Before or when visiting Cambodia, English is widely spoken and understood. French and Mandarin are also spoken frequently in the country; most elderly Cambodians speak French and many people in the Khmer-Chinese populations speak Mandarin.

**Some Important Khmer Phrases**  
**Hello:** Jum reap sou(formal) or Sou sdey (informal)  
**Good bye:** Jum reap leah (formal) or Leah hi (informal)  
**Yes:** Baht (for men), Cha (for women)  
**No:** A-dtay  
**No Thank you:** A-dtay arkun  
**Please:** Soam-un-jern  
**Thank you:** Arkun  
**Sorry:** Som-dtoah  
**Good:** La-or  
**Bad/no good:** Ot la-or  
**Please speak slowly:** Soam ni-yay yeut-yeut  
**Do you understand me?** : Ta nee-uk voo-ul knyom

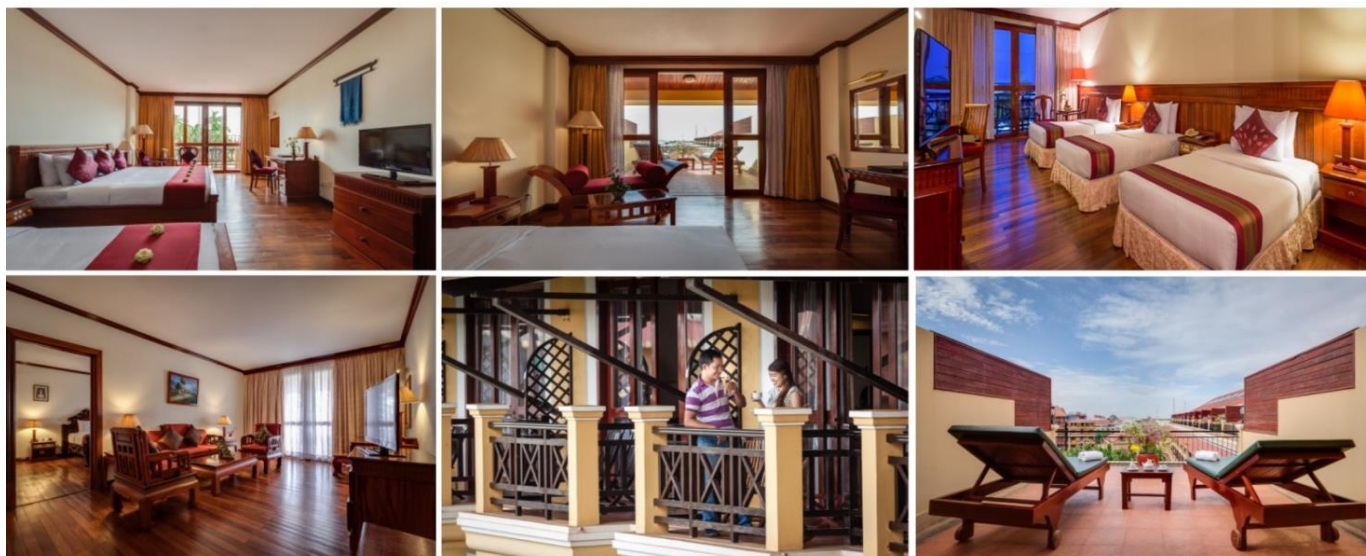
### 1.4 Embassies & Consulates (address in Phnom Penh City)

Country	Telephone	Fax
Australia	023 213 470	023 213 413
Belgium Honorary Consulate	023 214 024	023 214 024
United Kingdom	023 427 124/ 023 213 697	023 427 125
Brunei	023 211 457-8	023 211 456
Bulgaria	023 217 504	023 212 792
Canada	023 213 470	023 211 389
China	023 720 920	023 720 922
Cuba	023 213 965	023 217 428
Denmark	023 987 629	023 993 065
European Commission	023 211 102	023 216 997
France	023 430 020/ 023 430 026	023 430 041/023 430 037
Germany	023 216 193 / 023 216 381	023 427 746
India	023 210 912-3	023 213 640/ 023 210 914
Indonesia	023 216 148/ 023 217 934	023 217 566 / 023 217 947
Japan	023 217 161/ 023 210 331	023 216 162
Laos	023 982 632	023 720 907
Malaysia	023 216 176-7	023 426 101
Philippines	023 215 145/ 023 222 203	023 215 143
South Korean	023 211 900-3	023 219 200
Switzerland	023 219 045	023 213 375
Singapore	023 360 855-6	023 360 950
Vietnam	023 726 284/ 023 362 741	023 362 314
Myanmar	023 213 664-5	023 366 194/ 023 368 184
United States of America	023 216 436/ 023 728 179	023 728 600/ 023 216 437

## II) ACCOMMODATION

The 11th ICERD Organizing Committee **recommends you to reserve ANGKOR HOTEL** (next page), where is a sister Hotel of Angkor Paradise Hotel (Conference Venue) and locates in walking distance to Conference Venue.

### **ANGKOR PARADISE HOTEL (Conference Venue)**



<b>Room Rate at Angkor Paradise Hotel</b>	<ul style="list-style-type: none"><li>• USD70.00 /room/night for Deluxe Single/Twin</li><li>• USD85.00/room/night for Deluxe Triple</li><li>• USD90.00/room/night for Club Classic Single/Twin</li><li>• USD150.00/room/night for Executive Suite Single/Double <b>Including with Airport pick up and transfer</b></li></ul>
-------------------------------------------	----------------------------------------------------------------------------------------------------------------------------------------------------------------------------------------------------------------------------------------------------------------------------------------------------------------------------------

#### **Benefit offer in the Room rate:**

- Welcome drink and cold towels upon group arrival
- In room amenities on arrival including water (replenished every day)
- Complimentary coffee/tea making facility
- Complimentary use of the Swimming Pool
- Complimentary access to the steam room and sauna
- Complimentary Buffet breakfast at Palm Restaurant
- Complimentary used of internet (WIFI)

Check in time is 2 pm and check out time is 12 noon. Check in before or check out after these times are subject to early check in or late check-out charges.

#### **RESERVATIONS CONTACT:**

**Address:** Address: National road No6, Phum Taphul

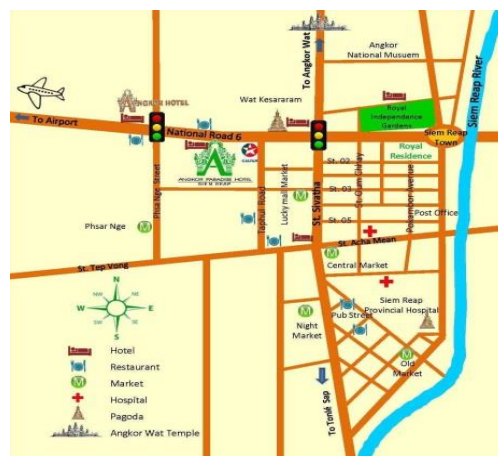
Sangkat Svay Dangcum, Siem Reap

Tel: +855 63 760 690

Fax: +855 63 760 691

Email: [rsvn@angkorparadis.net](mailto:rsvn@angkorparadis.net) or  
[info@angkorparadise.net](mailto:info@angkorparadise.net)

Website: [www.angkorparadise.net](http://www.angkorparadise.net)



**✚ ANGKOR HOTEL (Recommended hotel by the 11<sup>th</sup> ICERD Organizing Committee)**  
***Sister Hotel of Angkor Paradise Hotel (Walking distance to Conference Venue)***



<p><b>Room Rate at Angkor Hotel</b>  <b><u>(Special rate for the 11<sup>th</sup> ICERD participants)</u></b></p>	<ul style="list-style-type: none"> <li>• USD40.00 /room/night for Deluxe Single/Twin</li> <li>• USD55.00/room/night for Deluxe Triple</li> <li>• USD55.00/room/night for Junior suite room</li> </ul> <p><b>Including with Airport pick up and transfer</b></p>
----------------------------------------------------------------------------------------------------------------------	-----------------------------------------------------------------------------------------------------------------------------------------------------------------------------------------------------------------------------------------------------------------

**Benefit offer in the Room rate:**

- Welcome drink upon group arrival
- In room amenities on arrival including water (replenished every day)
- Complimentary coffee/tea making facility
- Complimentary use of the Swimming Pool
- Complimentary access to the fitness center
- Complimentary Buffet breakfast at Lotus Restaurant
- Complimentary use of internet (WIFI)

Check in time is 2 pm and check out time is 12 noon. Check in before or check out after these times are subject to early check in or late check-out charges.

**RESERVATIONS CONTACT:**

**Address:** National Road No6, Phum Taphul, Sangkat Svay Dangkum, Siem Reap

Tel: +855 63 964 301

Fax: +855 63 964 302

Email: [info@angkorhotel.net](mailto:info@angkorhotel.net)/[om@angkorhotel.net](mailto:om@angkorhotel.net)

Website: [www.angkorhotel.net](http://www.angkorhotel.net)

**When you reserve the room, please inform you are the 11<sup>th</sup> ICERD participant.**  
**Otherwise, you cannot get the special rate.**





## HOLY ANGKOR HOTEL



**Address:** #171, Taphul Road, Svay Dangkum, Siem Reap Town, Cambodia, Siem Reap, Siemreab-Otdar Meanchey, Cambodia  
**Tel:** +855 63 963 174, **Mob:** +855 12 982 082, 12 682 368  
**Email:** [info@holyangkorhotel.com](mailto:info@holyangkorhotel.com),  
**Email:** [booking@holyangkorhotel.com](mailto:booking@holyangkorhotel.com)  
**Website:** [www.holyangkorhotel.com](http://www.holyangkorhotel.com)



## JASMIN LODGE

**Address:** Road N 6, 307 Taphul Village, Svay Dongkum Commune, Siem Reap, Kingdom of Cambodia.  
**Phone :** +855 (0)12 784 980 /( 0)97 77 90 119/, (0) 63 76 06 97  
**Fax :** +855 (0)63 76 42 47  
**E-mail :** [kunn@jasminelodge.com](mailto:kunn@jasminelodge.com), [info@jasminefamilyhostel.com](mailto:info@jasminefamilyhostel.com)  
**Website:** <http://www.jasminelodge.com>

## MOTHERHOME INN

**Address:** Tapul Village, Sangkate Svay Dangkum, Bakheng Road, Krong Siem Reap  
**Phone number:** +855 (0) 12 963 438  
**Email:** [motherhomeangkor@gmail.com](mailto:motherhomeangkor@gmail.com)  
**Website:** [www.motherhomeinn.com](http://www.motherhomeinn.com)



Additionally, these are guesthouses around venue. These are cheaper.



### III) CONFERENCE VENUE

#### **ANGKOR PARADISE HOTEL**

Address: National road No6, Phum Taphul

Sangkat Svay Dangcum, Siem Reap

Tel: +855 063 760 690

Fax: +855 063 760 691

Email: [info@angkorparadise.net](mailto:info@angkorparadise.net)



### IV) WELCOME COCKTAIL AND DINNER VENUE

#### ➤ **28<sup>th</sup> February 2020 (Welcome party):**

Welcome Cocktail will be held at Angkor Paradise hotel at Pool Terrace



#### ➤ **29<sup>th</sup> February 2020 (Banquet and Awarding ceremony):**

Gala Dinner will be hosting at Angkor Paradise Hotel with cultural show



## V) SIEM REAP EMERGENCY SERVICES

<p>❖ <b><u>Royal Angkor International Hospital</u></b> International-standard medical services. 24-hour emergency care, ambulance, translation, evacuation. <i>National Route 6 (Airport Road), <a href="#">Siem Reap</a></i> Tel: 063-761 888, 012-235 888 <a href="http://www.royalangkorhospital.com">www.royalangkorhospital.com</a></p> <p>❖ <b><u>Siem Reap Provincial Hospital</u></b> Very rudimentary facilities. <i>Located in the Old Market area, <a href="#">Siem Reap</a></i> Tel: 063-764 091</p> <p>❖ <b><u>U-Care</u></b> Pharmacy, health and beauty care products. 1) <i>Old Market area (at the end of Pub Street), <a href="#">Siem Reap</a></i> Tel: 063-956396 2) <i>Lucky Mall on Sivutha Blvd, <a href="#">Siem Reap</a></i> Tel: 063-966 683 <a href="http://www.u-carepharmacy.com">www.u-carepharmacy.com</a></p> <p>❖ <b><u>Angkor Hospital for Children</u></b> Equipped to deal with minor medical problems. <i>Located in the Old French Quarter in the center of town, <a href="#">Siem Reap</a></i> Tel: 063-963 409 <a href="http://www.fwab.org">www.fwab.org</a></p>	<p>❖ <b><u>Pachem Dental Clinic</u></b> Full dental services including cosmetic, restorative, bleaching, dentures, implants and children's dentistry. <i>#242, Angkor Wat Road, in front of Old Stadium</i> Tel: 063-965 333 <a href="http://www.pachemdental.com">www.pachemdental.com</a></p> <p>❖ <b><u>Tourist Police</u></b> A police station are located opposite the main entrance/admission station to the Angkor Archaeological Park. Tel: 012-402424, 012-969991, 012-838768</p> <p>❖ <b><u>Fire Fighter</u></b> Tel: 012-784464</p>
-------------------------------------------------------------------------------------------------------------------------------------------------------------------------------------------------------------------------------------------------------------------------------------------------------------------------------------------------------------------------------------------------------------------------------------------------------------------------------------------------------------------------------------------------------------------------------------------------------------------------------------------------------------------------------------------------------------------------------------------------------------------------------------------------------------------------------------------------------------------------------------------------------------------------------------------------------------------------------------------------------------------------------------------------------------------------------------------------------------------------------------------------------------------------------	----------------------------------------------------------------------------------------------------------------------------------------------------------------------------------------------------------------------------------------------------------------------------------------------------------------------------------------------------------------------------------------------------------------------------------------------------------------------------------------------------------------------------------------------------------------------------

## VI) WEATHER FORECAST

The dry NE monsoon is at its height with generally fine, dry weather. The temperature in February is noticeably warmer than January, particularly by the end of the month. It is still generally dry, but water levels are starting to become difficult for boat travel. This is definitely still the high season, however, and last minute hotel bookings can be difficult, particularly if Chinese New Year falls here. Temple sites remain crowded with Asian visitors, especially.

The hottest months of the year are just around the corner so you can expect temperatures to gradually rise throughout the month. Despite this, February is considered 'relatively' cool, averaging around 27°C across the country.

## VII) THINGS TO DO IN SIEM REAP

*Siem Reap* is an ancient city located in the northwest of Cambodia. It is the most popular tourist destination in the country because of magnificent Angkor Wat and temple ruins spreading out across the region. Besides the temple that is known of, *Siem Reap* is also a hub of natural and cultural attractions to be discovered. The following list includes highly-recommended destinations and activities during your stay in *Siem Reap*.



## 7.1 Historical & Cultural Attractions

### Angkor Wat

Angkor Wat is the most famous of all the temples. It was built as a temple and mausoleum for King Suryavarman II at the peak of Khmer Empire in the first half of the 12<sup>th</sup> century. The colossal temple today is the world's largest religious monument in the world. It is must-see attraction when you are in Siem Reap.



### Ta Phrom

Ta Phrom was constructed around mid-12<sup>th</sup> century to early 13<sup>th</sup> century by King Jayavarman II dedicated to his mother. Also known as the "Tomb Raider" temple, Ta Phrom is famous on the tourist route because of huge trees and roots growing out of its wall. Yet, other than its popularity in the Hollywood, Ta Phrom has great of its own disguise with its replica to Bayon style of arts.



### Bayon Temple

The Bayon Temple is another beauty of the structures in the Angkor Wat Archaeological Park. Situated to the north of Angkor Wat, it was once at the center of the ancient city of Angkor Thom, and it is best known for its many towers with gently smiling faces on each side.



### Banteay Srei

Banteay Srei was built during the second half of the 10<sup>th</sup> century and located in the north-east of East Mebon. The temple is a precious gem and a jewel in Khmer art, with the finest and the most intricate carvings to be found in Angkor.





## 7.2 Natural Attractions

### Phnom Kulen

Phnom Kulen literally translated as “Kulen Mountain”, is located around 50 km to the northeast of Angkor Complex. The mountain is believed by the locals to be the most sacred mountain in Cambodia; therefore, it is a popular destination of pilgrimage on weekends and during festivals. Attractions include a gigantic Buddha, hundreds of lingas carved in the reverbed, waterfalls, and remote temples.



### Kompong Pluk

Kompong Pluk is a cluster of 3 floating villages with houses built on slits on the Tonle Sap, situated around 16 km from the Siem Reap city center. It is a popular destination for a boat tour to see sunset, and mangrove forests, and witness the lifestyle on the Tonle Sap.



### Prek Toal Ecotourism Site

Situated within the Tonle Sab Biosphere Reserve, Prek Toal is a stunning bird sanctuary and Ramsar site. It is home to around 120 bird species including storks, ibises, and pelicans. However, the bird sanctuary is not assessable during the dry season due to the low water level. December to February is the best time to visit Prek Toal.



## 7.3 Cultural Activities

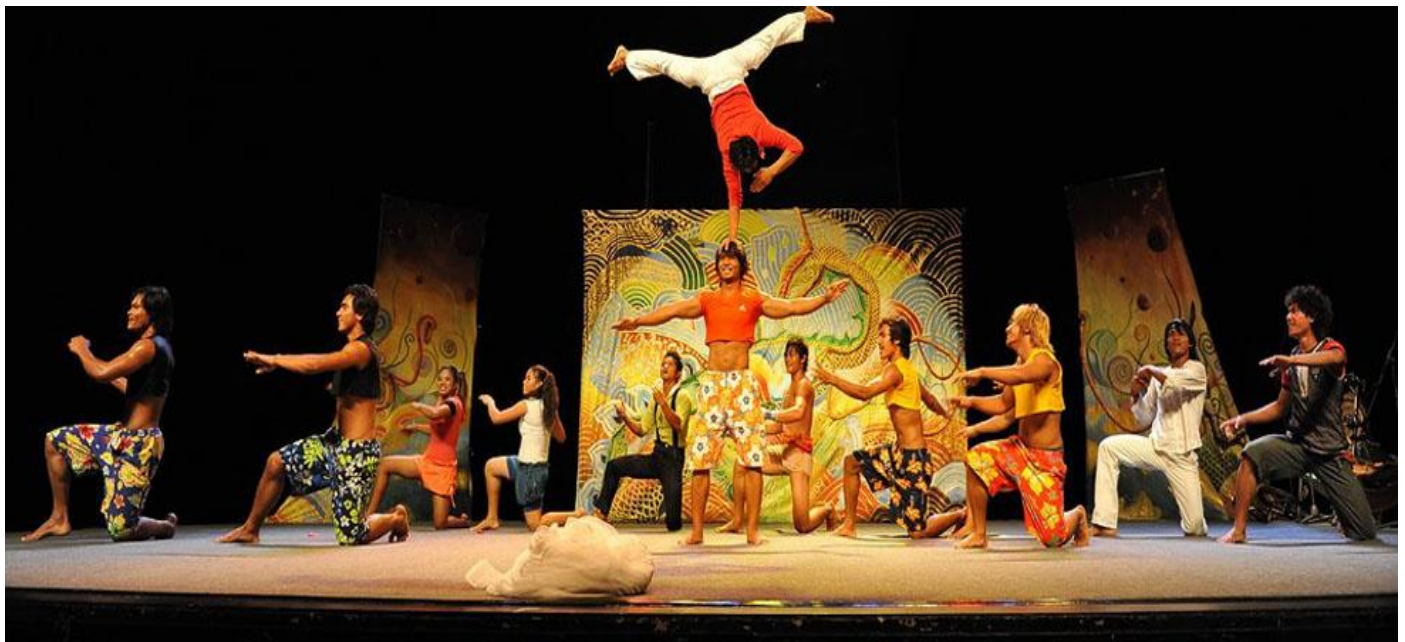
### Apsara Dance Performance

Apsara Dance is a traditional dance of Cambodia, which is dated back to 7<sup>th</sup> century. It is an essential part of Khmer culture, which constitutes as link between different religions that Cambodia had been built upon-Buddhism, Hinduism, and Animism. Historically, the dance was performed exclusively for the King, and was taught only at the Royal Court. In Siem Reap, Apsara dance performance is available in several restaurants and hotels.



### Phare, the Cambodia Circus

Phare, the Cambodian Circus, is one of Cambodia's most innovative form of art entertainment that combines dance, theatre, original live music and circus to tell Cambodia stories from recent pasts folklore and modern society. The show is performed in the evening.



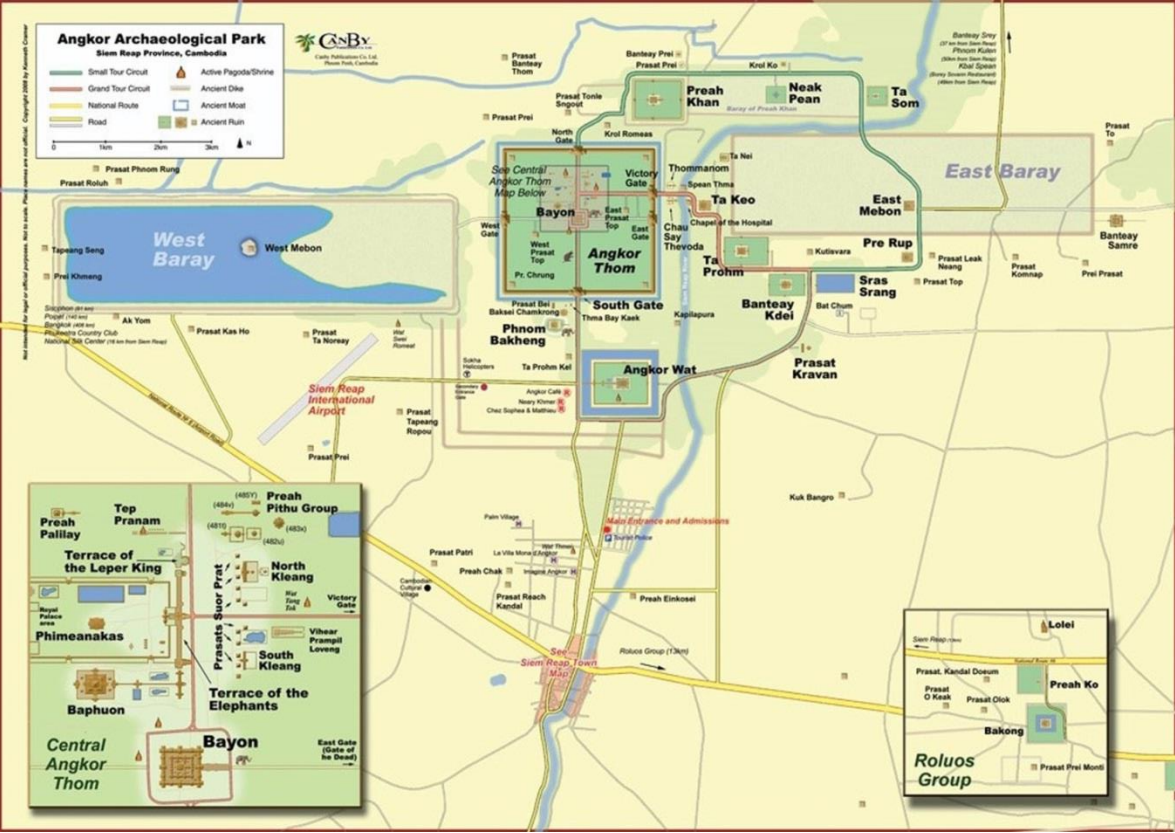


VIII) MAP OF SIEM REAP

❖ Hotel Map



❖ Temple Map





❖ **City Map**